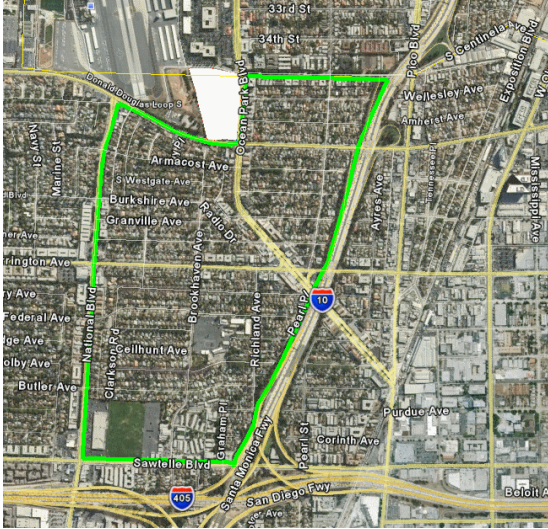


1. *Include 50 L.A., 90064 homes (Evensong Drive and Sunset Parkway) in the one area by Bundy Drive and Ocean Park Boulevard that would make our boundaries consistent with Zone-2 of the MVCC.*



2. *Post NWA Committee meeting agendas and minutes on NWA Yahoo Groups*
3. *Establish a liaison to the MVCC with included rules*
4. *Form an Executive Committee consisting of the President, Vice-President, Treasurer, Secretary, Block Captain Leader and the Committee Chairs.*
5. *Budget Expenditures section(see wording below)*

Bylaws wording regarding:

Budget expenditures:

- The NWA “Budget” shall be divided into three sections: 1). Emergency Base, 2). Non-Discretionary Funds, 3). Discretionary Funds.
 - 1) Emergency Base – The Emergency Base is an amount that should be considered untouchable unless an emergency need is agreed upon by a **75% vote at general meeting**. The amount to be set aside in abeyance will be the larger of either \$3,000.00 or the sum of the two prior years Non-Discretionary Funds expenditures.
 - 2) *Non-Discretionary Funds – These funds are dedicated to the essential needs of the NWA, including:
 - a. Meeting room space for the monthly meeting: donation amount to St. Andrews Lutheran Church.
 - b. Website presence hosting fee
 - c. Monthly newsletter printing costs
 *Additional Non-Discretionary Funds may be added by a **75% vote at general meeting**.
 - 3) Discretionary Funds – These are expenditures that are decided on an ad-hoc basis with the approval of a **majority vote taken at a general meeting**.
- The Treasurer shall be responsible for budget records and monthly reports.
- The Budget Committee shall set guidelines for Discretionary Fund expenditures, a copy of which shall be included with the appendixes to the bylaws.